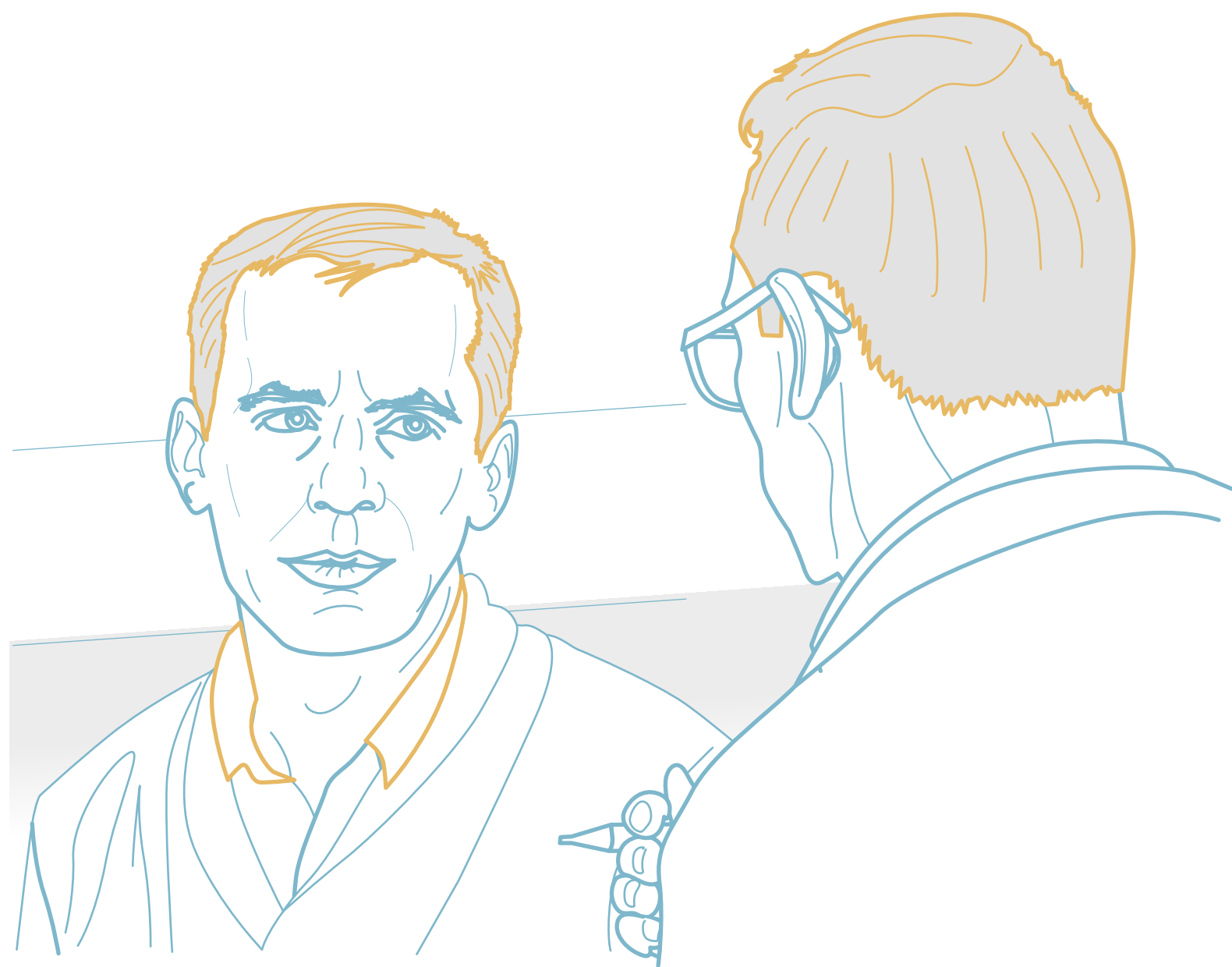


CANCER

Diagnosis
is delayed
6 months
from onset of
symptoms



"All.Can Argentina Cancer
Patients Survey"
IPSOS HEALTHCARE (2020)

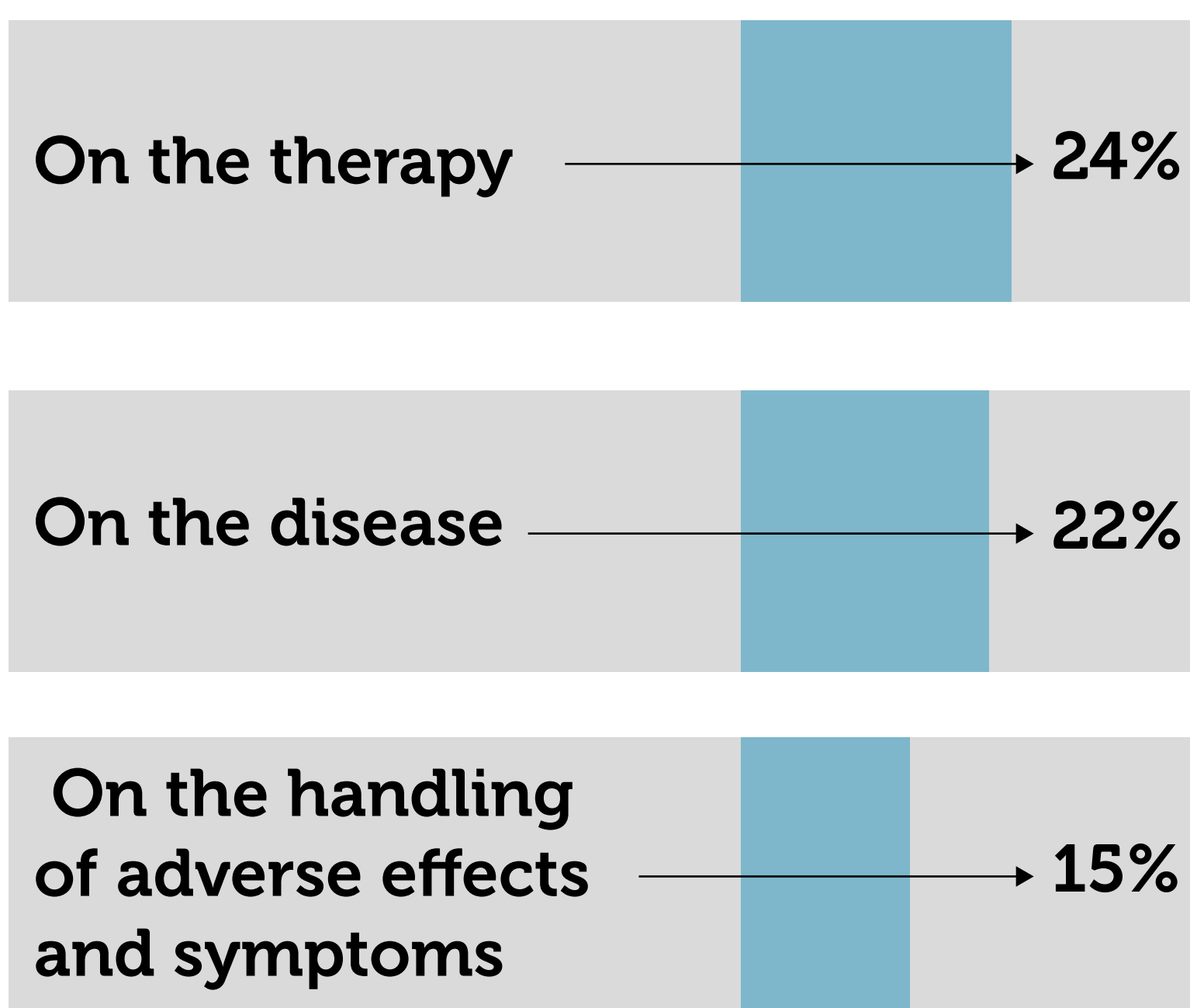


INFORMATION RECEIVED



7 out of 10 patients report
that the medical information
received on the subject
is adequate

Desire for more information



One-third
of patients

stated the need for more in-depth
talks with the doctor before
diagnosis

Source: IPSOS HEALTHCARE (2020)

Buenos Aires
Metropolitan Area (AMBA)

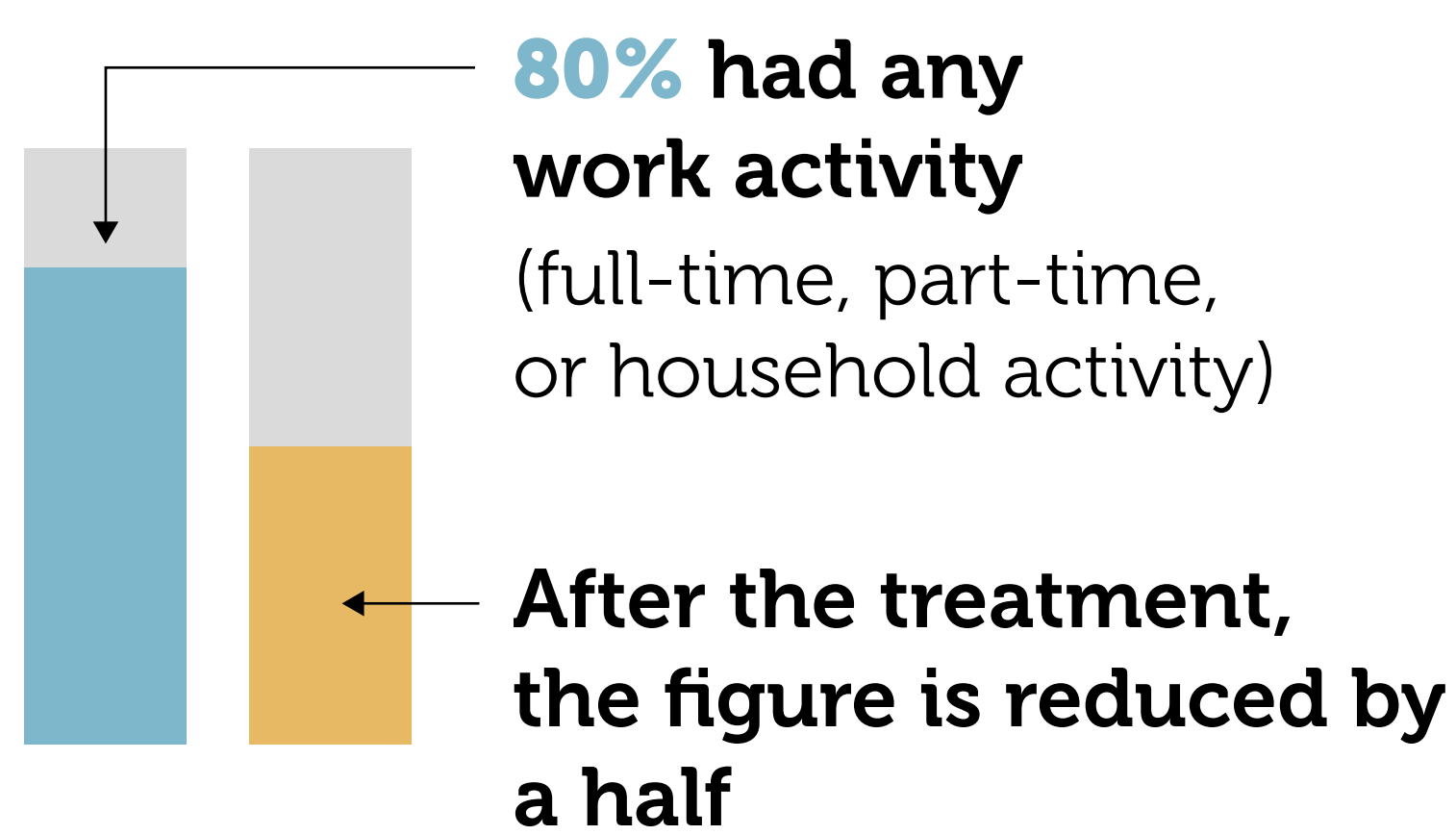


EMOTIONAL, PHYSICAL, AND FINANCIAL CHALLENGES

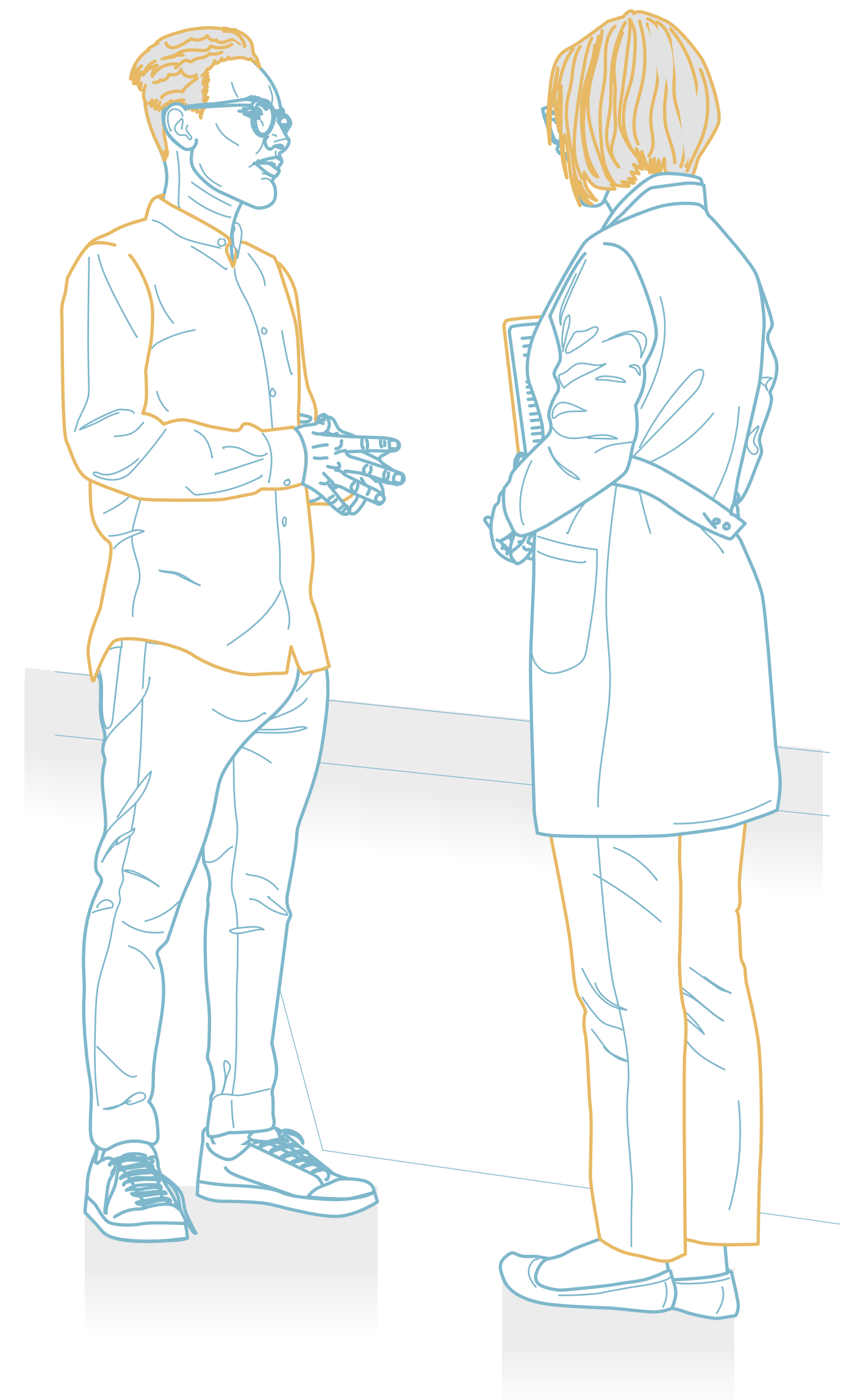
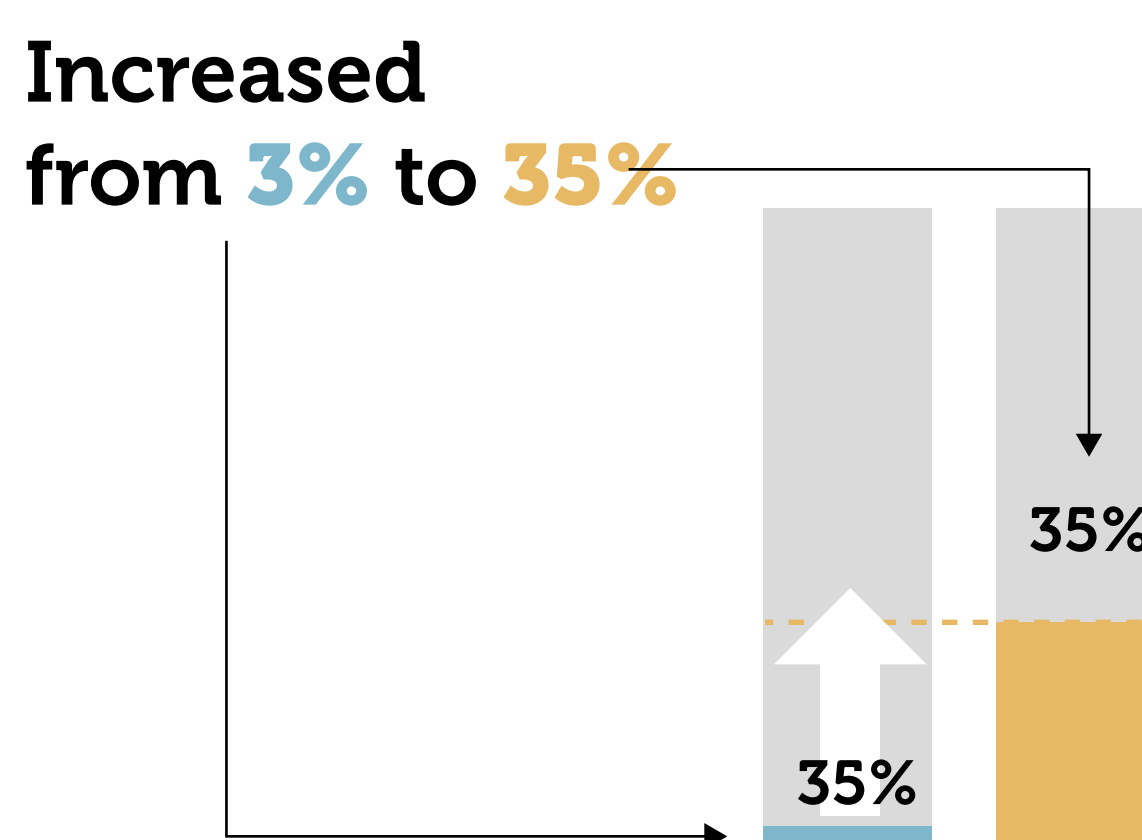
Work impact



5 out of 10 respondents
reported lack of energy and fatigue
after the treatment



People with disabilities:



RESOURCES THAT MIGHT HAVE HELPED TO BETTER GET THROUGH THE PROCESS

Transportation
for medical
appointments

Financial
counseling

Administrative
support on medical
documentation and
insurance issues

Household
care help



TECHNICAL DATA SHEET

→ **400 cases**

Men and women over 18 years
old, residents of AMBA with a
cancer diagnosis.

84% of patients without prepaid HI and **16%** with prepaid HI.

The quantitative period covered from **December 26, 2019 to May 9, 2020.**

40-minutes face-to-face or telephone interviews.